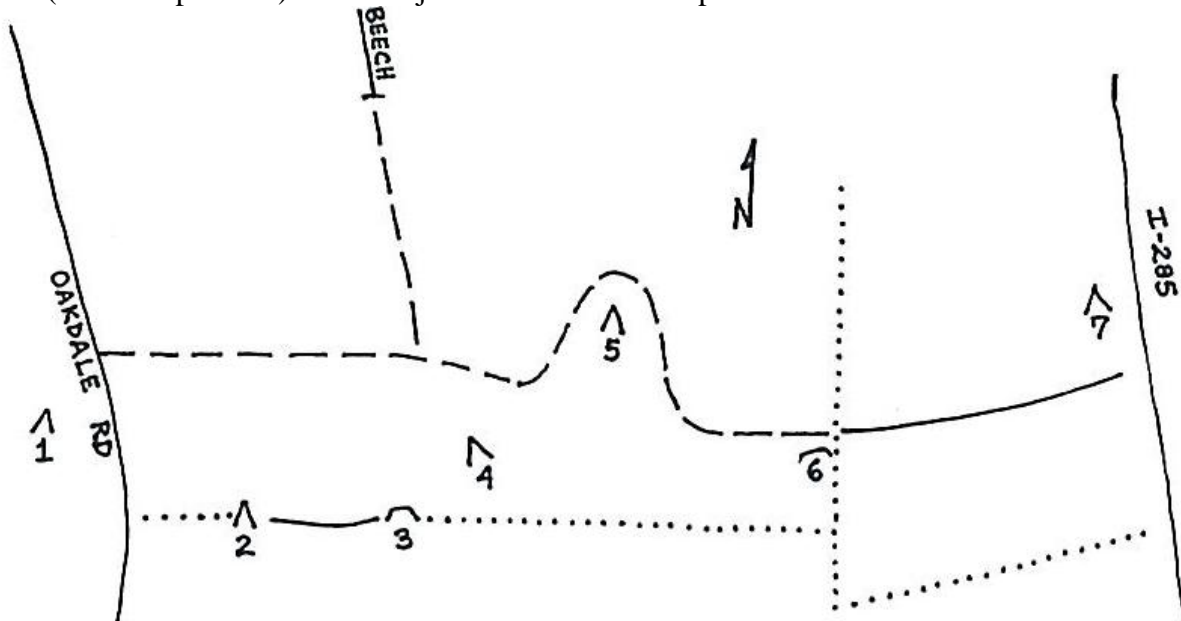


# GEORGIA BATTLEFIELDS

Published by Georgia Battlefields Association, Inc., a non-profit organization dedicated to preservation of Georgia's Civil War history and sites. Contact newsletter editor by e-mail: [info@georgiabattlefields.org](mailto:info@georgiabattlefields.org)

## Close call for redan at Fort Drive

The rezoning, clearing, and construction along Cobb County's Fort Drive has provided material for several newsletter articles, most recently in September. A near disaster for the site's artillery redan (#3 on map below) is the subject of this month's report.



When GBA representatives inspected the site on Saturday, 26 August, we noted that trees had fallen onto and damaged the protective fence east of the redan. More alarmingly, earth removal to the south of the redan had undermined the protective fence and come dangerously close to allowing part of the redan to cascade down a 30 foot slope (see photo).



The damage discovered on 26 August.



The initial repairs on afternoon of 28 August.

GBA quickly e-mailed photos to Cobb County officials, including Commission Chairman Sam Olens. Olens promptly indicated his dismay and advised that he would send inspectors to the site on Monday morning (28 August). Mid morning on 28 August, GBA received a call from the developer (Pulte Homes: [www.pulte.com](http://www.pulte.com)), who said the county had issued a stop work order that would not be lifted until GBA was satisfied with the repairs. We replied that a GBA rep would come to the site when notified that the repair efforts were complete.

At 1:30 p.m. on 28 August, a GBA rep met at the site with a Cobb County inspector and several representatives from Pulte. The trees had been trimmed away from the fence, the undermined fence section had been re-replaced, and earth had been pushed onto the cutaway slope behind (south of) the redan (see photo). The Cobb County inspector required that the trees be entirely removed, more earth be added to the slope, and erosion control matting be placed over the earth. GBA agreed to these stipulations, pending another inspection.

On 29 August, the Cobb County inspector again visited the site and subsequently requested GBA's agreement to lift the stop work order. Based on the inspector's report and photos of more earth and an anti-erosion mat in place behind the redan, GBA concurred.

In a 29 August e-mail, the developer indicated the slope collapsed on 25 August, one day before GBA reps observed the damage. The developer also promised to meet the county's stipulations and to protect this unique and irreplaceable fortification. GBA subsequently communicated to county officials and the developer the need for 25 feet of ground behind the redan to allow room for a replica cannon, a historical marker, a permanent protective fence, and a walking trail.



Retaining wall and initial fill on 27 September.

During a 27 September follow-up visit with the developer, a GBA representative noted that the planned retaining wall was in place to support the temporary anti-erosion matting (see photo). The temporary fill will be supplemented with more soil to allow for the replica cannon, fence, and walking path behind the redan.

While we believe the initial soil collapse was unintentional, we're grateful to Cobb County government for its response to this threat to a unique fortification. GBA will continue to monitor the site.

## **GBA nominates Cobb County sites for most endangered list**

The sites along the Lost Mountain-Brushy Mountain Line (including Gilgal Church) witnessed several artillery and infantry actions during 4-19 June 1864. These sites are still under assault. The once ten-mile long Confederate line has been broken into dozens of fragments, most of them on private property. Development has moved apparently inexorably through central Cobb County and into west Cobb, encroaching on historic sites.

While GBA and neighborhood groups have successfully opposed some property rezonings, many sites have already been lost. The continuing threat to the earthworks—both Confederate and Federal—led GBA to nominate the central Cobb County sites for the Civil War Preservation Trust's 2007 most endangered list. The list, released in late February each year, includes ten most endangered sites plus additional sites at risk. Since 2002, GBA has successfully nominated sites for both categories. For 2006, the Chattahoochee River Line was among the ten most endangered, while Kennesaw Mountain was at risk (see March newsletter).

Anyone is welcome to nominate sites for the most endangered list. For entry criteria, see [www.civilwar.org/news](http://www.civilwar.org/news).

**Georgia Battlefields Association  
7 Camden Rd NE  
Atlanta GA 30309**

**[www.georgiabattlefields.org](http://www.georgiabattlefields.org)**

**October 2006**

**Address correction requested  
Return postage guaranteed**